



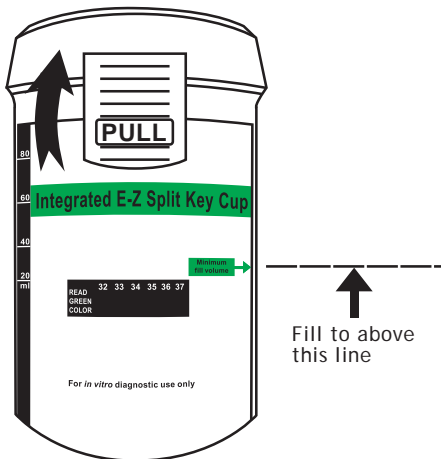
Clonal Technologies

# One Step Multi-Drug Screen Test Panel with Integrated E-Z Split Key Cup (Urine)

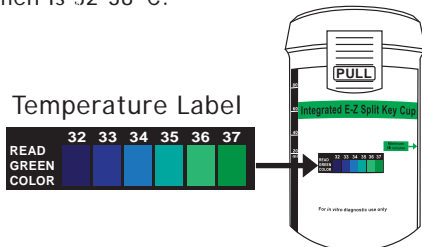
## Instructions for Use

Allow the test panel, urine specimen, and/or controls to become room temperature (15-30°C) prior to testing.

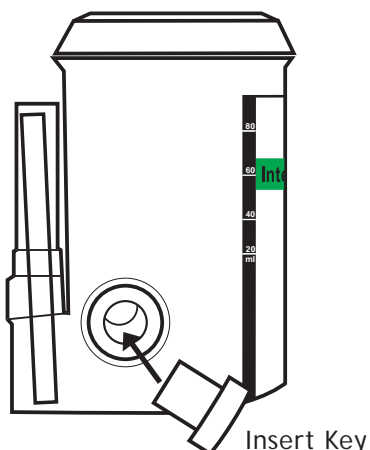
1. Bring the pouch to room temperature before opening it. Remove the cup from the sealed pouch and use it as soon as possible.
2. Pull tab to remove cap. Collect specimen in the cup. Cup should be filled to above minimum fill volume line. Secure cap by pressing down on all three corners.



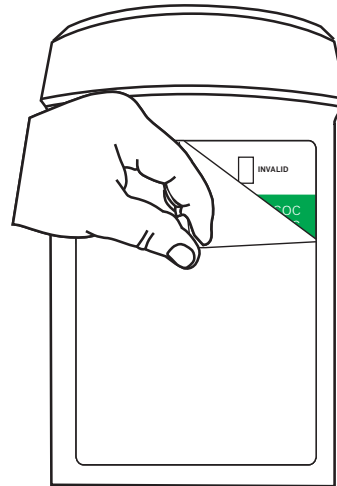
3. Check the temperature label (Temp Label) up to four minutes after specimen collection. A green colour will appear to indicate the temperature of the urine specimen. The proper range for an unadulterated specimen is 32-38°C.



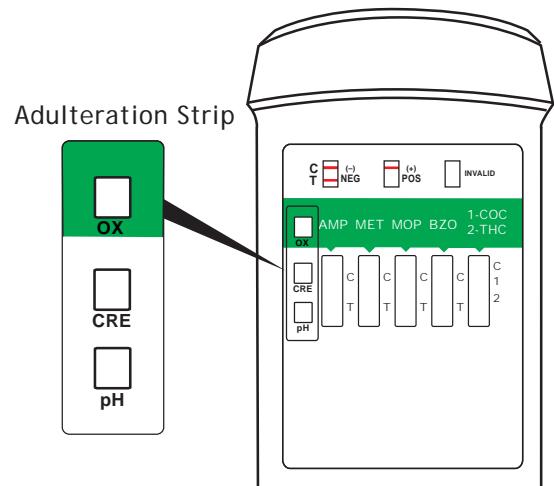
4. Check the cap for a tight seal. Date and initial the security seal label. Place it over the cap.
5. Remove one key from the kit. Place the cup on a flat surface. Push the key into the socket of the cup to begin the next text. Start timer.



6. Remove the peel-off label covering the test results. Read the adulteration strip between three and five minutes.



7. Compare the colours on the adulteration strip to the enclosed colour chart. If the result indicates adulteration, do not interpret the drug test results. Either retest the urine or collect another specimen.



8. Read the drug strip results at five minutes. The drug strip results remain stable for up to 60 minutes.

